



Citrine® Plus

Algacide & Herbicide

Clean Water. Healthier Plants.

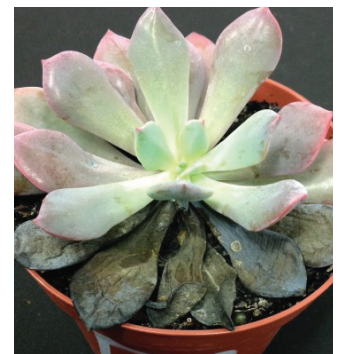


Irrigation water can harbor diseases that thrive in the greenhouse.
Manage Pythium, Phytophthora and other Oomycetes in your irrigation water.

Citrine® Plus is a fast-acting, innovative copper-based solution that effectively controls water molds in irrigation water, offering greenhouse and nursery operations a cost-effective, preventative strategy to safeguard crops against the detrimental effects of water molds in your growing media.

How to Treat for Water Molds in Irrigation Water

Timing	Citrine Plus Rate	Purpose
Preventative Early Spring	0.6 - 1 gal per acre ft.	To target and prevent early expansion of water mold populations
Preventative Regular Maintenance	0.6 - 1 gal per acre ft.	To keep water molds from growing back and to block new molds from entering with surface water, especially during rainy periods
Reactive Control	1.2 - 3 gal per acre ft.	For reactive control of irrigation pond water mold populations



Pythium root and crown rot on echeveria

Benefits of a Healthy Plant

- **Prevention of Water Molds:** By controlling water molds in aquatic environments such as irrigation ponds, the spread of these pathogens to plants through irrigation systems is minimized.
- **Reduced Root, Stem, and Crown Rot:** Effective water mold management means fewer instances of rot in critical parts of the plant, creating stronger and more robust plants.
- **Cost-Effective Management:** Reducing the presence of water mold diseases can decrease the need for curative fungicide applications later in the crop cycle.
- **Higher Quality Products:** Plants that grow without the detriments of water molds are of higher quality, satisfying greenhouse managers and customer needs.
- **Stronger Root Systems:** Early and proactive control of water molds allows seedlings to develop strong root systems, offering extra protection against pathogens that might enter the irrigation system later in the growing season.
- **Increased Crop Yields:** Healthier plants free from the stresses of water mold diseases are more productive, reducing loss and waste.
- **Improved Seedling Health:** By preventing water mold growth, seedlings are less likely to suffer from diseases before and after they emerge from the soil, leading to higher survival rates.
- **Enhanced Nutrient Uptake:** With the reduction of water mold populations, plants are better able to absorb vital nutrients without competition from these parasites, leading to healthier growth.



Greenhouse & Nursery Solutions