



Akari[®] 5SC

Miticide/Insecticide



Special Solutions. For Specialty Markets

Use Sites:

- Greenhouses
- Shadehouses
- Outdoor nurseries
- Outdoor landscape plantings
- Interior landscape plantings
- Interior containerized plantings

Formulation:

5% Suspension Concentrate

Packaging:

1 quart container

Active Ingredient:

Fenproximate

Chemical Class:

Phenoxyproazole

Mode of Action (MOA Code):

METI Acaricide (21)

Rate:

16 - 24 fl. oz. per 100 gallons

Restricted Entry Interval (REI):

12 hours

Application techniques:

Apply as a thorough cover spray ensuring spray contact with complete leaf canopy including undersides of leaves

Application timing:

Begin application at first sign of pest populations. Treat plants when pests are immature or at a susceptible stage and populations are building, before crop damage occurs.

Akari Miticide – Stops the Damage!

Immediately after an application, Akari's unique "stop-feeding action" not only stops further damage to your plants, but also halts the laying of eggs. So you have peace of mind that the mites are not eating further into your profits while they die in 4 to 7 days. Active on all life stages, but especially effective on the plant damaging larvae, nymph and adult stages. Akari provides long residual action of 21 - 28 days. Akari will be a powerful addition to your IPM rotation for control of several mite and insect species including two-spotted spider mites, broad mites, and cyclamen mites, as well as suppression of citrus and long-tailed mealybug.



Features of Akari miticide/insecticide are:

- Active on all developmental stages of mites, with main activity on larvae, nymphs and adults
- Unique "stop-feeding action"
- 21 - 28 days of residual control
- Gentle to natural enemies and beneficial insects—Perfect fit for an IPM program
- Labeled for control of several different mite species and mealybugs

Pests Controlled

Akari controls a broad spectrum of mites including several species of Spider mites, Tarsonemid mites, Eriophyid mites, and Mealybugs.

Mite Species

- Spider Mites
 - Citrus Red Mite
 - European Red Mite
 - Pacific Mite
 - Southern Red Mite
 - Spruce Spider Mite
 - Strawberry Mite
 - Two-Spotted Spider Mite
 - Willamette Mite
- Tarsonemid Mites
 - Broad Mite
 - Cyclamen Mite
- Eriophyid Mites
 - Hemlock Rust Mite
 - Hackberry Rust Mite

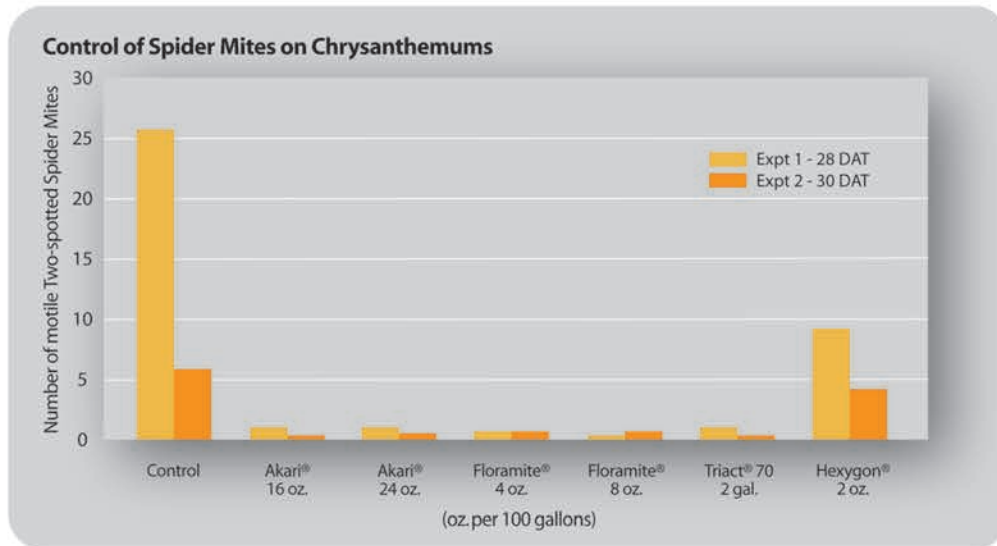
Other Pests

- Citrus Mealybug
- Long-tailed Mealybug
- Whitefly

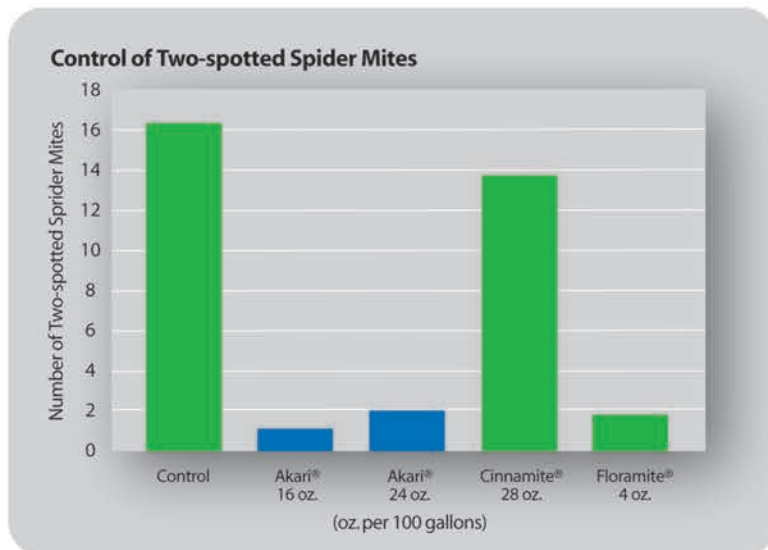


Application Information

Akari is a contact miticide, therefore, thorough spray coverage of the foliage canopy is essential for good control. Treat plants when pests are immature or at a susceptible stage and populations are building, before crop damage occurs at rates between 16 - 24 oz. per 100 gallons. Adjust spray volumes accordingly to allow for dense or overgrown foliage which otherwise may prevent adequate coverage.



Number of motile two-spotted spider mites per 4 chrysanthemum leaves following miticide applications 28 days (Expt. 1) and 30 days (Expt. 2) after treatment. J.F.Price, Gulf Coast Research & Education Center, University of Florida, Bradenton, Summer 2000.



Number of motile two-spotted spider mites per 1-inch² of ornamental sweet potato leaves following miticide applications 21 days after treatment. J.R. Baker & E. Reeves, North Carolina State University, Sept. 2000.



Special Solutions. For Specialty Markets

Always read and follow label directions. Akari is a registered trademark of Nichino America, Inc. Cinnamite is a registered trademark of Mycotech Corporation. Floramite is a registered trademark of Crompton Corporation. Triact 70 is a registered trademark of OHP, Inc. Hexygon is a registered trademark of Gowan Company, LLC. All rights reserved. ©Copyright 2013 SePRO Corporation.

Akari® 2SC
Miticide/Insecticide